

OUT OF THIS WORLD
TRADING CONDITIONS

Acuity Trading Tools:

USER GUIDE



← Back to List



EURGBP

EURGBP

0.8648

33%

Buy Limit

0.8620

Target 1

0.8690

Target 2

0.8740

Stop

0.8595

Confidence

Market Chart

4XC

Confidence 0% 100%

Class All Status All

Buy Limit Sell Limit

Confidence 80%

Stop 6.78

Entry 6.87

Target 6.818

Buy Sell

Confidence 67%

Buy 111.21

Stop 97.78

Entry 97.78

Target 88.78

Buy Sell

Confidence 20%

Stop 29925

Entry 29425

Target 28425

Buy Sell

Confidence 40%

Target 1945.80

Entry 1845.00

Stop 1908.00

Buy

Confidence 80%

Target 4350

Entry 4474

Stop 4449

Buy

Confidence 80%

Target 20300

Entry 24000

Stop 24200

Buy

Confidence 90%

Stop 8.8716

Entry 8.8666

Target 8.8816

Sell

Confidence 60%

Target 106.48

Entry 105.48

Stop 124.98

Buy

Confidence 80%

Target 1.7964

Entry 1.7814

Stop 1.7754

Buy

Confidence 60%

Stop 8.9712

Entry 8.9686

Target 8.9458

Sell

Confidence 80%

Target 1402

Entry 1380

Stop 1360

Buy

Confidence 60%

Target 75.55

Entry 75.55

Stop 75.55

Sell

Confidence 40%

Stop 182.70

Entry 182.00

Target 182.00

Sell

Confidence 20%

Target 0.8435

Entry 0.8435

Stop 0.8435

Buy

Confidence 20%

Stop 1.3100

Entry 1.3100

Target 1.3100

Sell

Confidence 20%

Target 1.3100

Entry 1.3100

Stop 1.3100

Sell

Confidence 20%

Target 1.3100

Entry 1.3100

Stop 1.3100

Sell

INDEX

- ▶ **Download & Installation**
- ▶ **Activating the plugin**
- ▶ **Uninstalling**
- ▶ **Troubleshooting common problems**
- ▶ **Signal Centre**
- ▶ **Economic Calendar**

What are the Acuity Expert Advisors

The Expert Advisors are a part of an advanced AI-Powered Trading Tool that collects, analyses, and delivers the latest market information, empowering you with a wealth of knowledge. These expert advisors are **Signal Centre, Market Alerts & Economic Calendar**.



Installing the **Expert Advisors** toolset


The installation is identical for both the **MetaTrader 4** and **5** versions of the expert advisors.

1. Download 4XC MT4/MT5 client

The 4XC MT4 or MT5 client is required to make use of the proprietary AI tool-set. You can download 4XC MT4/MT5 following this [link](#).

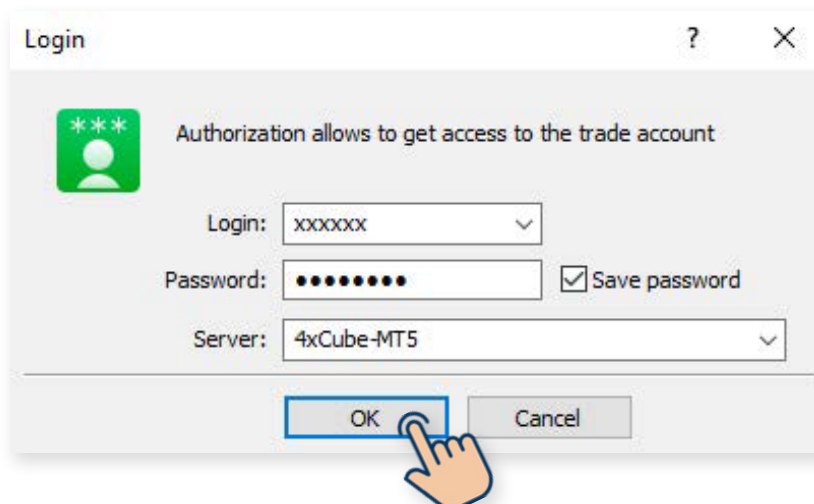
2. Download Expert Advisors

Our Expert Advisor Widgets can be installed on your **4XC MT4 or MT5 Windows client**.

Get Plugin (MT4) 

Get Plugin (MT5) 

3. Login to your 4XC MT4/MT5 client



Login

Authorization allows to get access to the trade account

Login: xxxxxx

Password: ●●●●●● Save password

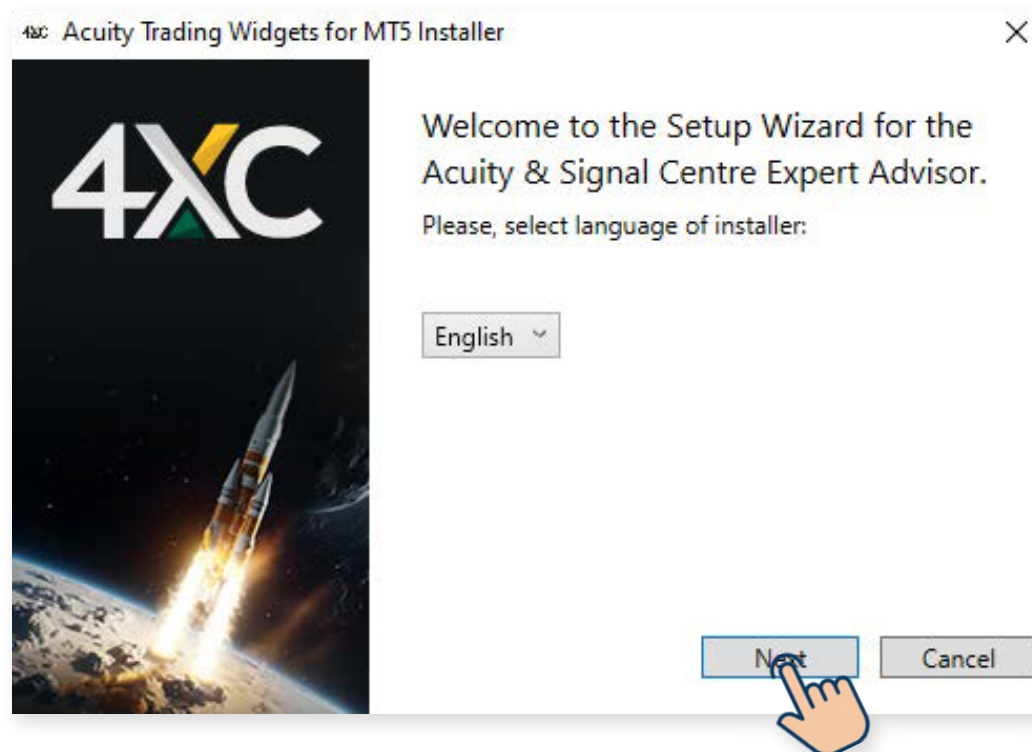
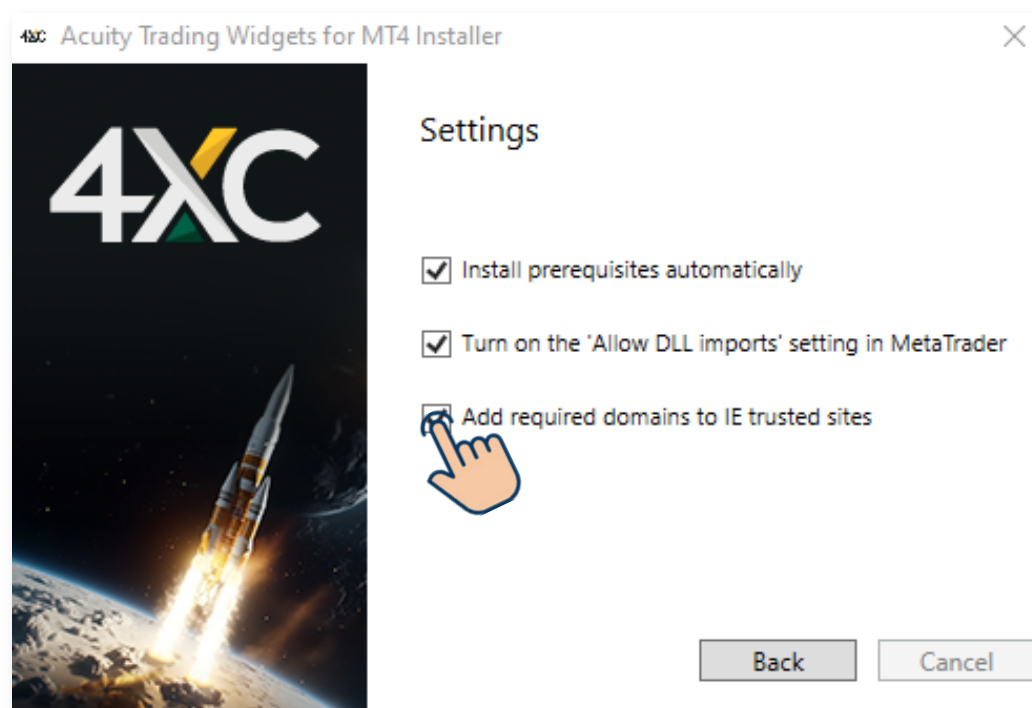
Server: 4xCube-MT5

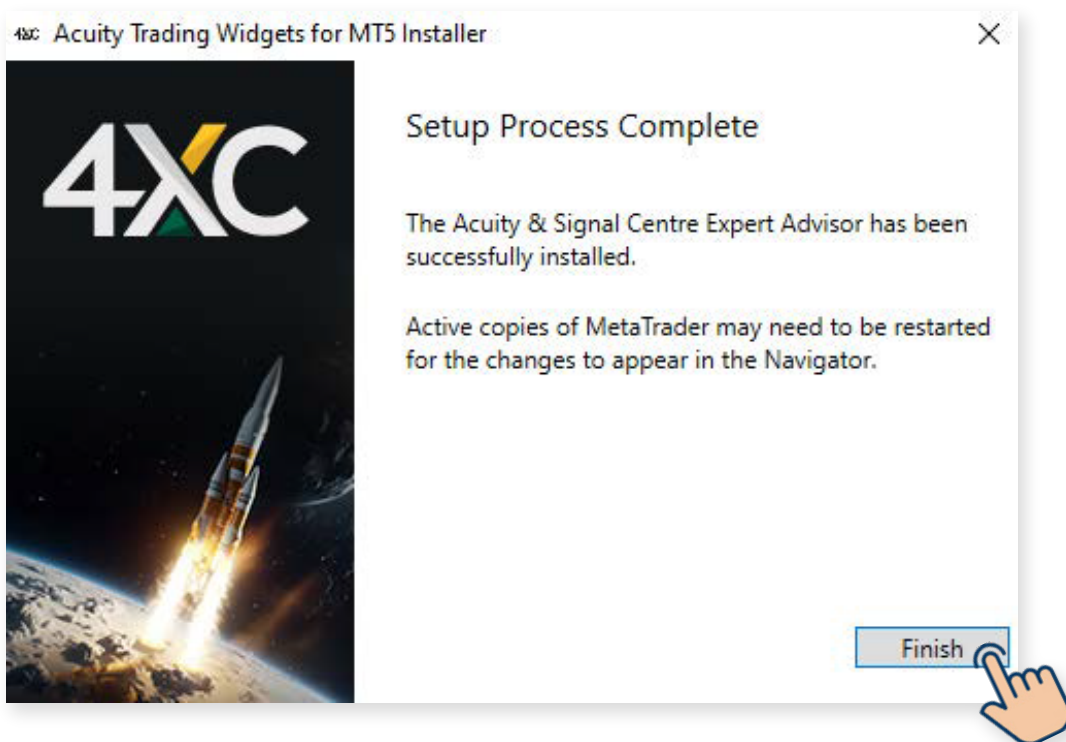
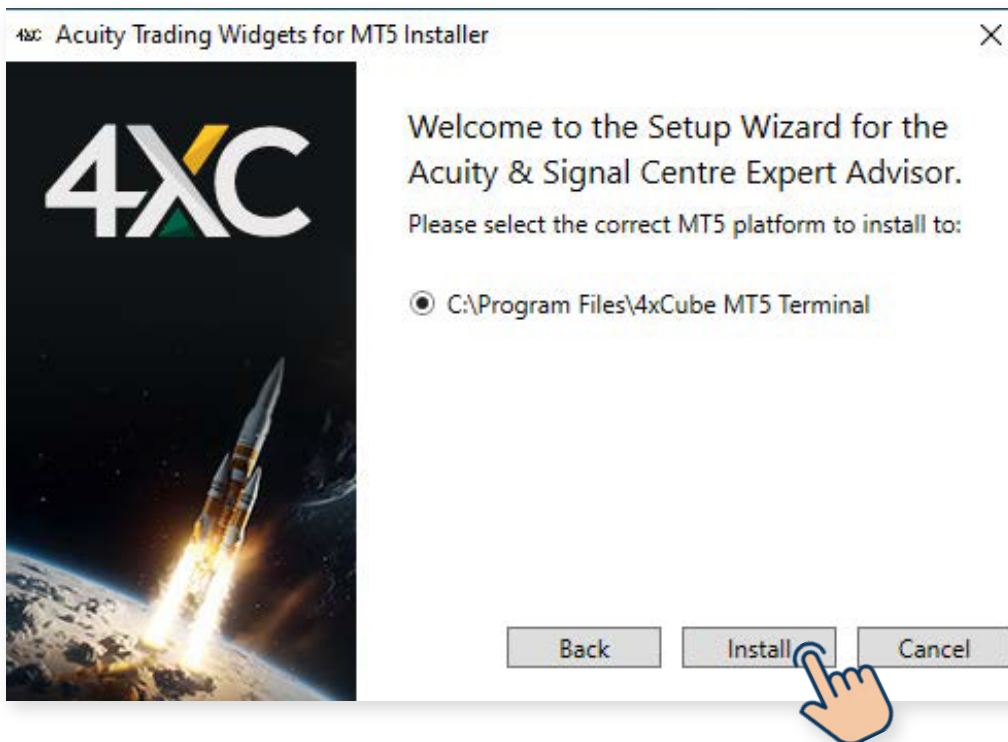
OK Cancel

4. After logging in successfully run the installer file

Follow the given instructions to complete the installation.

* You will have an option of accessing the "**Settings**" menu, where you can select the option to **allow DLL imports** (required for the expert advisors to run in MetaTrader) and modify **Internet Explorer Trusted Sites** settings.





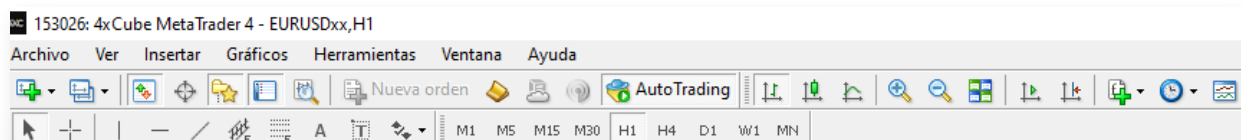
5. Finalising Installation

After you have followed all of the previous steps, restart your 4XC MT4/MT5 client to complete the installation.

6. Activate the plugin for MT4 or MT5

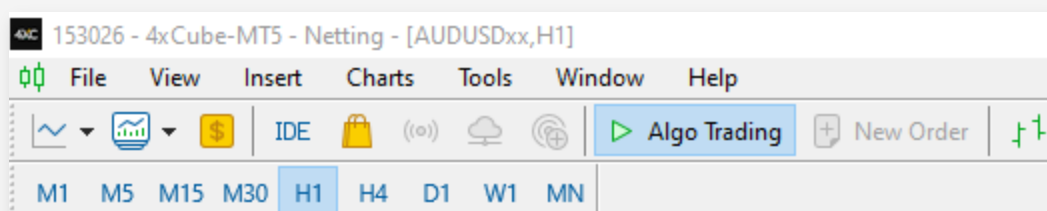
MT4 Activation

1. After completing the MT4 installation, **open the platform**.
2. Click on the **"AutoTrading"** button at the top.



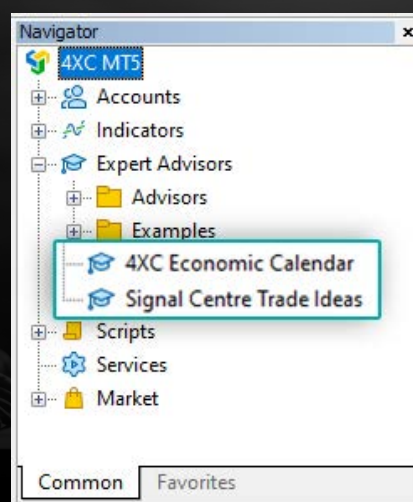
MT5 Activation

1. After completing the MT5 installation, **open the platform**.
2. In this case, click on the **"Algo Trading"** button at the top.



7. Begin using your AI-Powered plugin

You are now ready to access your new powerful Expert Advisors tools!

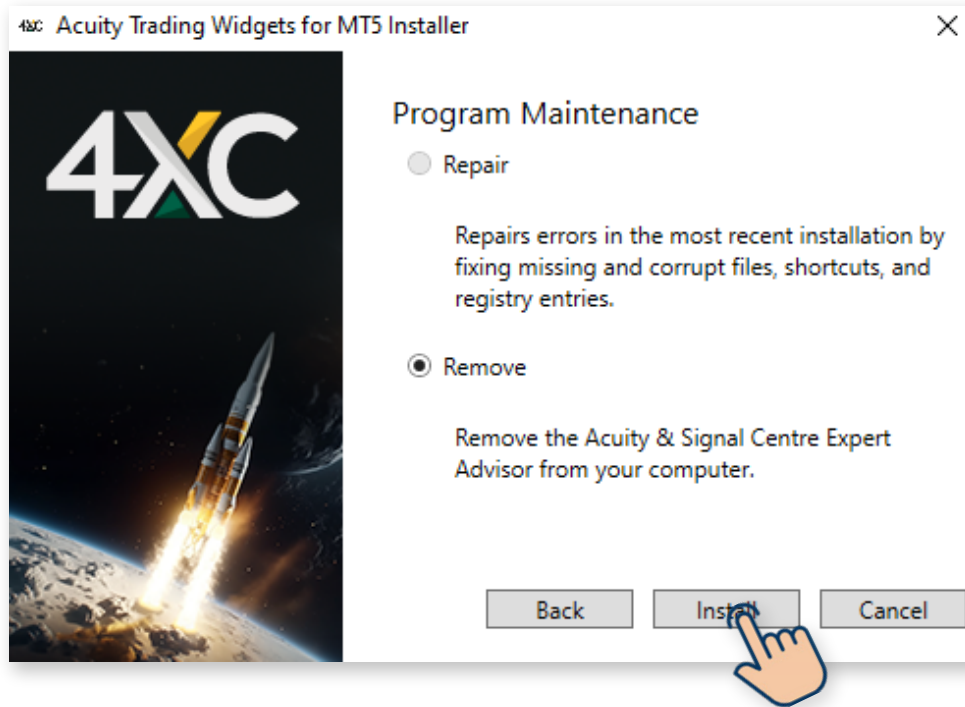




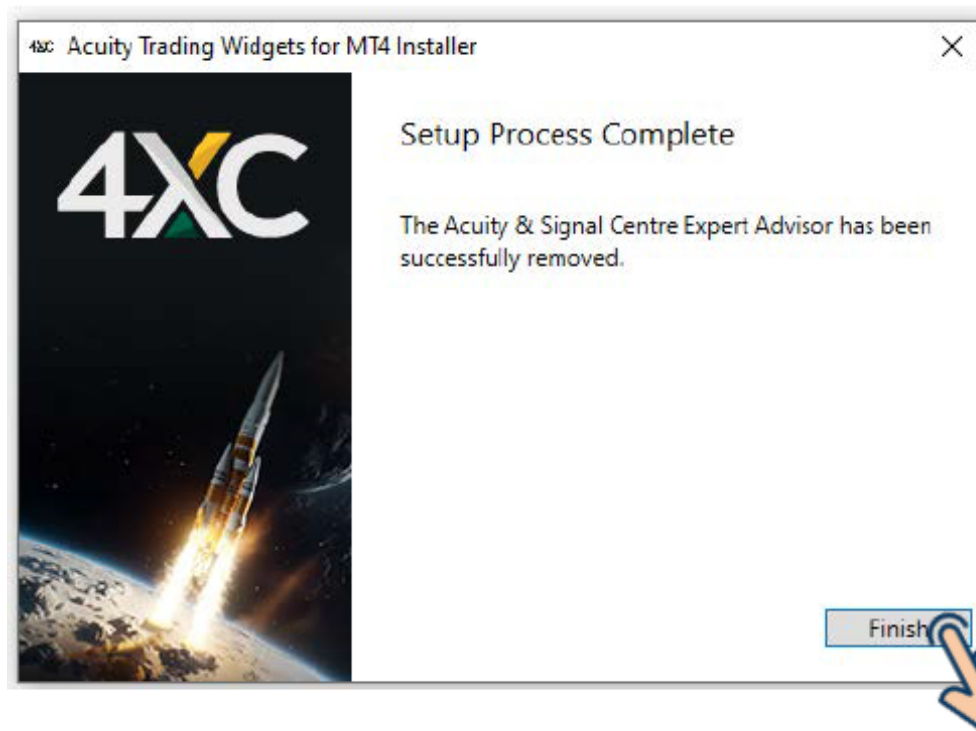
Uninstalling the expert advisors

To uninstall the expert advisors, there are 2 options available:

- **Run the installer** and follow the installation procedure outlined above. At the last step the EA will be removed.



Once the process is complete you will be shown the screen below, to signify that the **Expert Advisors have been uninstalled.**





Troubleshooting common problems

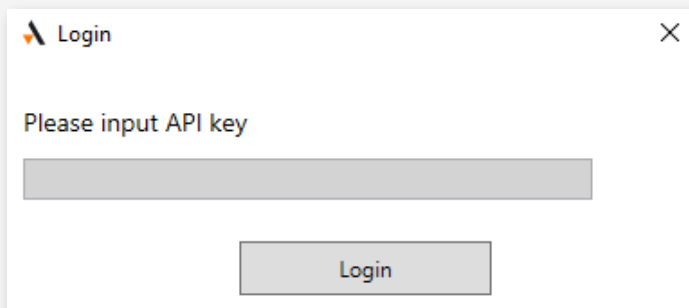
1. Error message occurs while running the installer

Possible reason: if you have an older installation of the expert advisors, those files might have become corrupt and prevent an updated installer to successfully complete the process.

Resolution Steps

1. **Uninstall the expert advisors** from the "Add/Remove Programs" section in Windows.
2. **Run the installer again.**
3. If the problem persists, please **contact 4XC's customer support team** for additional troubleshooting.

2. After installing and attaching the EA to a chart, an error message "Please input your API key" appears



Possible reason: for older versions of the installer the API key was written in the downloaded file name. This is where the authorisation process run by the EA was getting the account information from. Newer versions (as of October 2021) should not have this problem.

Resolution Steps

1. Copy the following API key from here: [618c140c-ac82-4099-b2f4-4e81ef26e94f](#)
2. **Input the copied API key** into the window above and click Login.

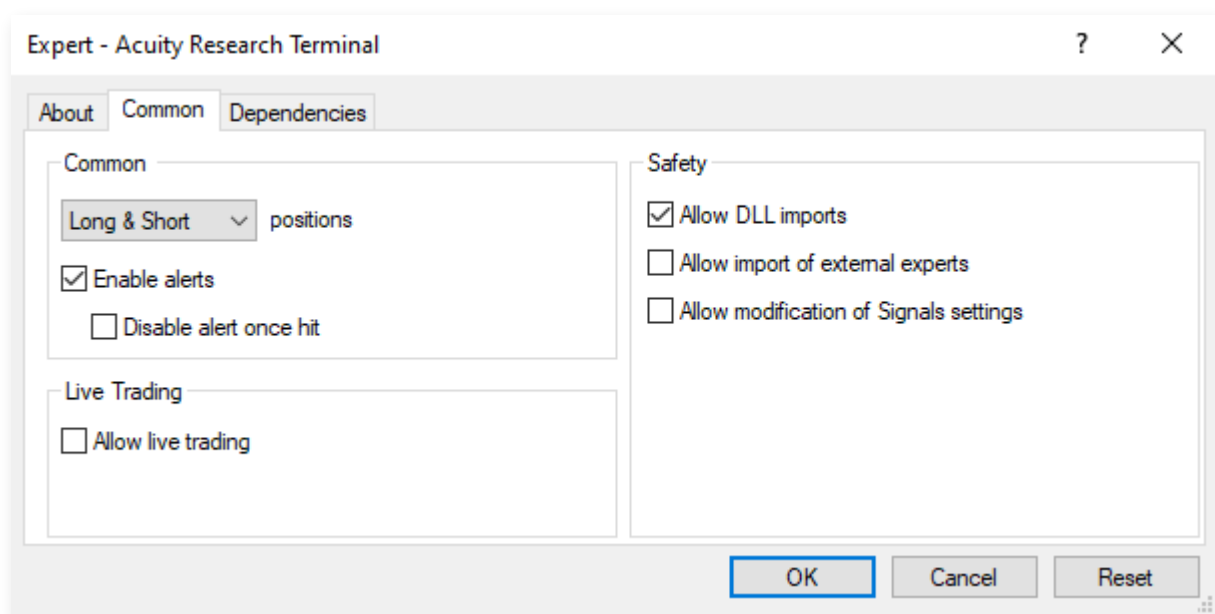
If the above step doesn't resolve the problem, please report it to 4XC's customer support team.

3. After installing and attaching the EA to a chart, the EA does not load, and no error message is displayed

Possible reason: the Acuity/Signal Centre EAs load the widgets using external scripts and DLLs, and this option may be disabled in MetaTrader for security reasons.

Resolution Steps

1. **Attach the EA to the chart again** by double-clicking the EA or by right-clicking it and selecting " Attach to a chart ".
2. **In the Expert Advisors Settings menu** that comes up, access the "Common" tab.
3. **Make sure that "Allow DLL imports" in the Safety section is checked:**



4. After installing and attaching the EA to a chart, an error "Access to server name denied" appears

Possible reason: when expert advisors are set up on an account, we ensure that only specified MetaTrader servers are permitted or "white-listed". This error usually arises if the server that the user is connecting from, has not been added to the white-list.

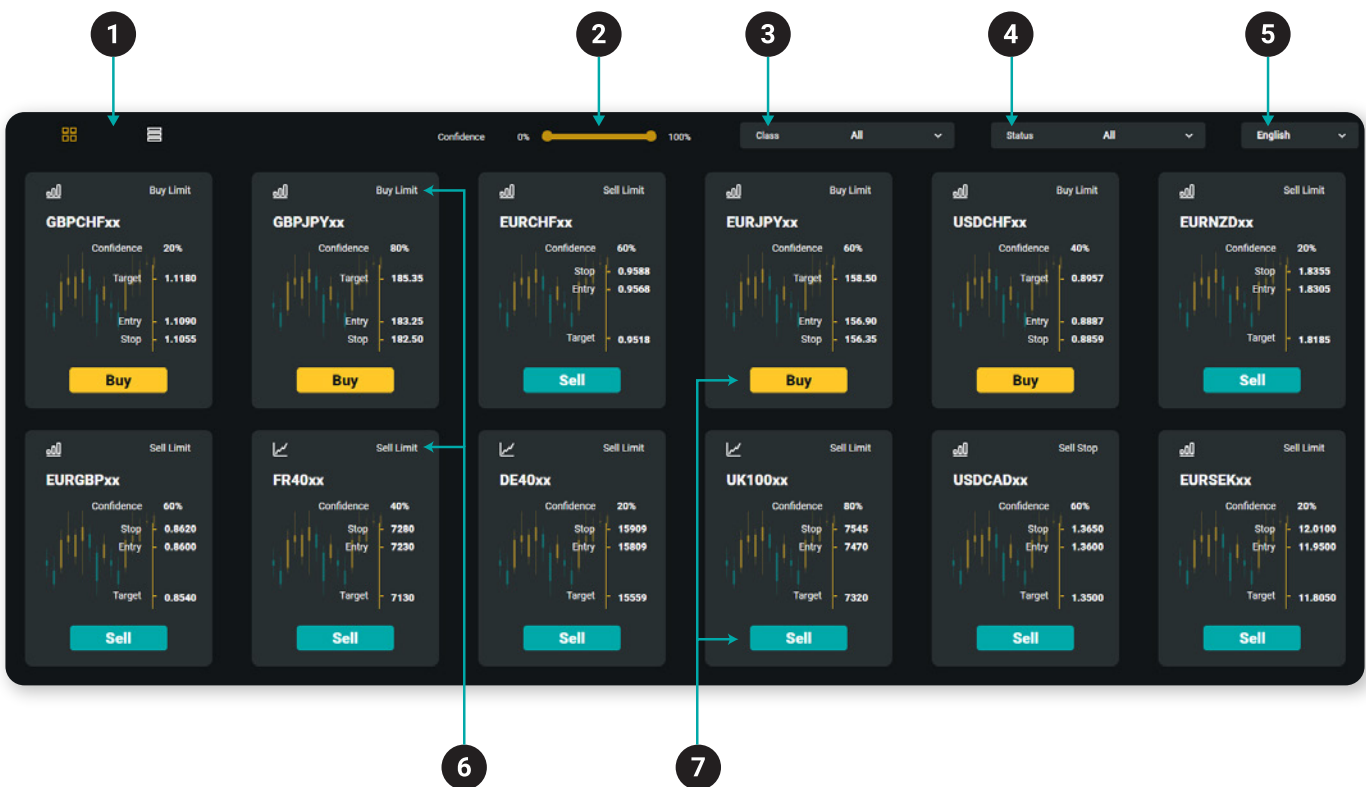
Resolution Steps

1. Check that the server you are connecting to belongs to 4XC and has given you access to the Acuity/Signal Centre expert advisors.
2. If yes, please reach out to 4XC's customer support team and request to add this server into the white-list.
3. If not, please make sure you are connecting to the server that belongs to 4XC and has given you access to the expert advisors.



How to Navigate the Homepage

All the current and recently expired Trade Ideas published by Signal Centre are listed on the homepage.



Key for Reference

- 1 Choose between tab or list view
- 2 Confidence rating filter
- 3 Asset class filter
- 4 Current Trade Idea status selector
- 5 Language Selection
- 6 Current Status of Trade Idea
- 7 Yellow / Blue colours used to quickly identify Buy / Sell opportunities

Market	Direction	Entry	Target	Stop	Duration	Confidence	Status
GBPCHFxx	Buy	1.1090	1.1180	1.1055	Intraday	20%	Buy Limit
GBPJPYxx	Buy	183.25	185.35	182.50	Intraday	80%	Buy Limit
EURCHFxx	Sell	0.9568	0.9518	0.9588	Intraday	60%	Sell Limit
EURJPYxx	Buy	156.90	158.50	156.35	Intraday	60%	Buy Limit
USDCHFxx	Buy	0.8887	0.8957	0.8859	Intraday	40%	Buy Limit
EURNZDxx	Sell	1.8305	1.8185	1.8355	Intraday	20%	Sell Limit
EURGBPxx	Sell	0.8600	0.8540	0.8620	Intraday	60%	Sell Limit
FR40xx	Sell	7230	7130	7280	Intraday	40%	Sell Limit
DE40xx	Sell	15809	15559	15909	Intraday	20%	Sell Limit
UK100xx	Sell	7470	7320	7545	Intraday	80%	Sell Limit
USDCADxx	Sell	1.3600	1.3500	1.3650	Intraday	60%	Sell Stop
EURSEKxx	Sell	11.9500	11.8050	12.0100	Intraday	20%	Sell Limit

How to Select a Trade

You can select a Trade Idea directly from the homepage by clicking on the tile on the Tab View or line on the List View. Alternatively, refine your selection by using one of the several filters available. These include:

Confidence

The Confidence bar allows you to filter Trade Ideas between 0% and 100% confidence.

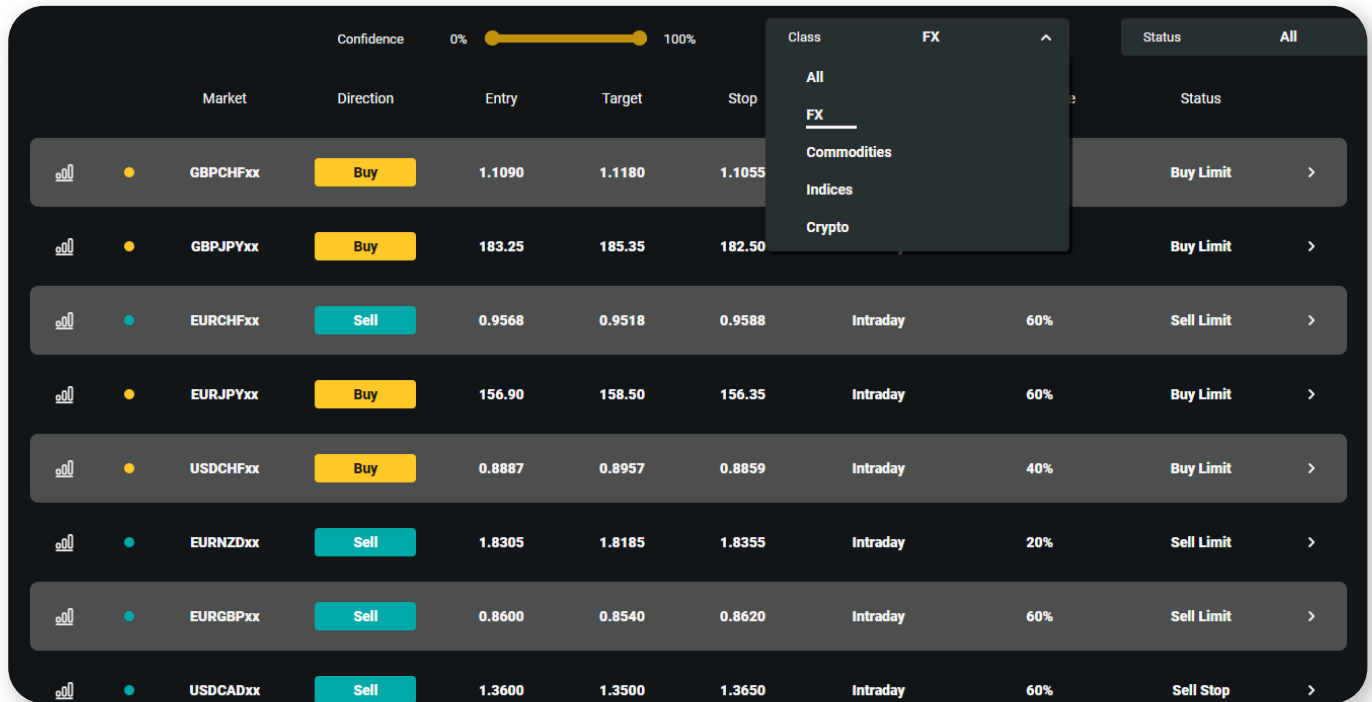


This rating is a rating score, calculated using a proprietary formula. Includes trend, analyst performance and sentiment analysis data.

		Confidence	0%	100%	Class	All	Status	All	English
Market	Direction	Entry	Target	Stop	Duration	Confidence	Status		
GBPCHFxx	Buy	1.1090	1.1180	1.1055	Intraday	20%	Buy Limit		
GBRJPYxx	Buy	183.25	185.35	182.50	Intraday	80%	Buy Limit		
EURCHFxx	Sell	0.9568	0.9518	0.9588	Intraday	60%	Sell Limit		
EURJPYxx	Buy	156.90	158.50	156.35	Intraday	60%	Buy Limit		
USDCHFxx	Buy	0.8887	0.8957	0.8859	Intraday	40%	Buy Limit		
EURNZDxx	Sell	1.8305	1.8185	1.8355	Intraday	20%	Sell Limit		
EURGBPxx	Sell	0.8600	0.8540	0.8620	Intraday	60%	Sell Limit		
FR40xx	Sell	7230	7130	7280	Intraday	40%	Sell Limit		
DE40xx	Sell	15809	15559	15909	Intraday	20%	Sell Limit		
UK100xx	Sell	7470	7320	7545	Intraday	80%	Sell Limit		
USDCADxx	Sell	1.3600	1.3500	1.3650	Intraday	60%	Sell Stop		

Class

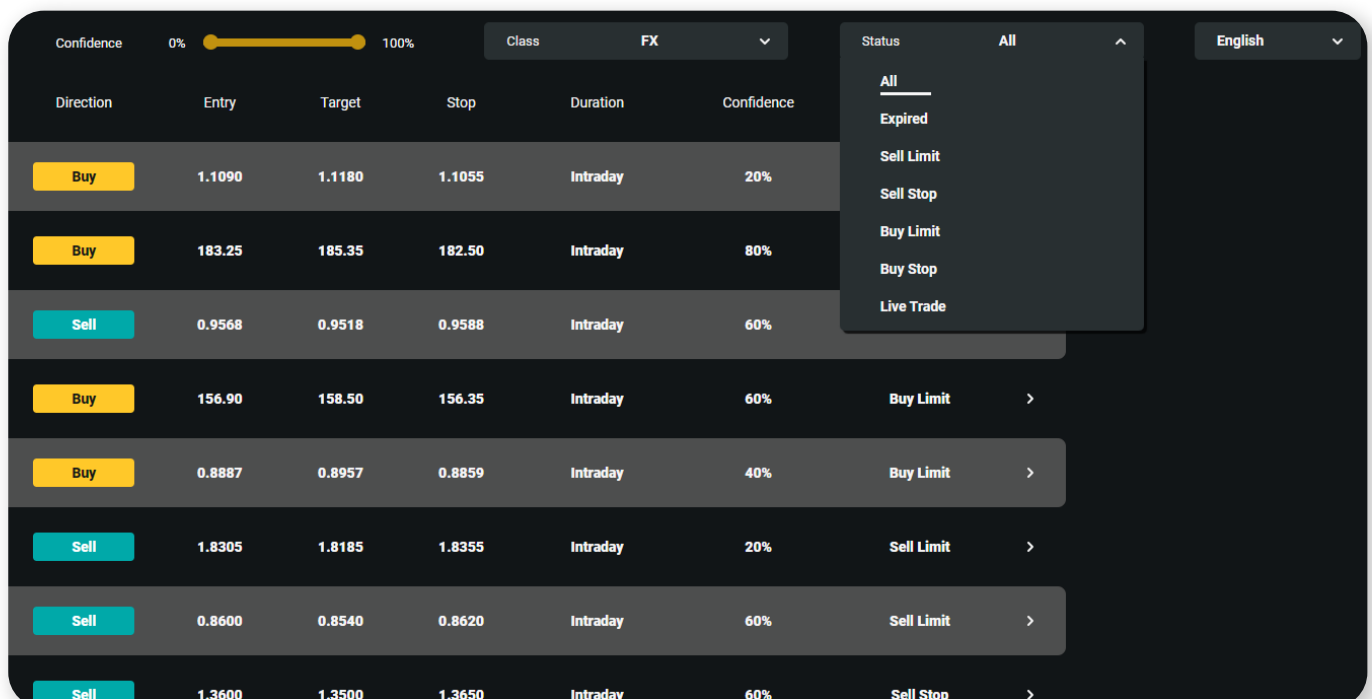
The Class tab allows traders to filter by the type of asset they are most interested in. Choose from all available Trading Instruments.



Market	Direction	Entry	Target	Stop	Status
GBPCHFxx	Buy	1.1090	1.1180	1.1055	Buy Limit
GBPJPYxx	Buy	183.25	185.35	182.50	Buy Limit
EURCHFxx	Sell	0.9568	0.9518	0.9588	Intraday 60% Sell Limit
EURJPYxx	Buy	156.90	158.50	156.35	Intraday 60% Buy Limit
USDCCHFxx	Buy	0.8887	0.8957	0.8859	Intraday 40% Buy Limit
EURNZDxx	Sell	1.8305	1.8185	1.8355	Intraday 20% Sell Limit
EURGBPxx	Sell	0.8600	0.8540	0.8620	Intraday 60% Sell Limit
USDCADxx	Sell	1.3600	1.3500	1.3650	Intraday 60% Sell Stop

Status

This filter allows the trader to select a Trade Idea based on its current status. The status is updated throughout the day as the Trade Idea progresses.



Direction	Entry	Target	Stop	Duration	Confidence	Status
Buy	1.1090	1.1180	1.1055	Intraday	20%	
Buy	183.25	185.35	182.50	Intraday	80%	
Sell	0.9568	0.9518	0.9588	Intraday	60%	
Buy	156.90	158.50	156.35	Intraday	60%	Buy Limit
Buy	0.8887	0.8957	0.8859	Intraday	40%	Buy Limit
Sell	1.8305	1.8185	1.8355	Intraday	20%	Sell Limit
Sell	0.8600	0.8540	0.8620	Intraday	60%	Sell Limit
Sell	1.3600	1.3500	1.3650	Intraday	60%	Sell Stop

Traders can select Trade Ideas from the following:

All	Displays all Trade Ideas
Expired	Displays all Trade Ideas
Sell / Buy Limit Stop	Depending on the type of signal, it will be labelled as one of the following categories: Sell Limit Pending order showing level above to open a short position Sell Stop Pending order showing level below to open a short position Buy Limit Pending order showing level below to open a long position Buy Stop Pending order showing level above to open a long position
Live Trade	If the price reaches its entry level the signal status will be changed to "Live Trade". Once the trade is live, we want to see the price reach the first target level and ideally the second target level.

Understanding the Trade Idea

Each Trade Idea on the homepage displays key information about the trade to help you time your entry and exit positions.

By clicking on the Trade Idea more details are revealed including additional data sets and the strategy behind each trade.

Status & Key Levels

Use the key levels to understand the parameters of the Trade Idea - where our analysts are looking to enter the trade, where to target and where they will place their stop loss.

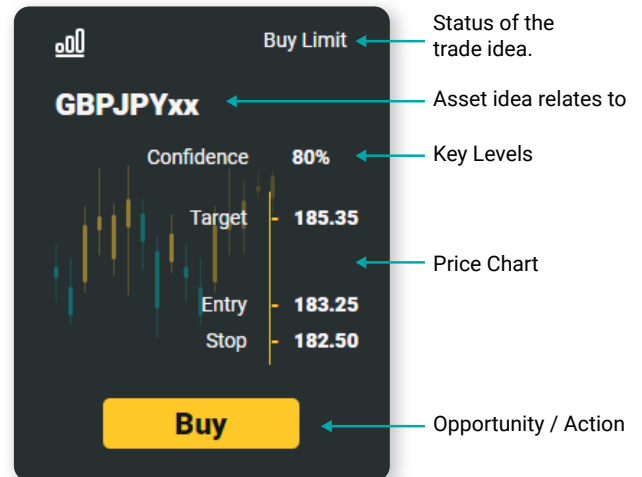
The status of the Trade Idea will change as the trade progresses throughout the day, determined by the target levels set.



Buy Signals

- 1 Entry Level** if the trade meets the entry level, the status will change to "Live".
- 2 Stop Level** if the trade goes live but the price drops to the stop level, the trade will close and the status will be updated to "Closed - Loss".
- 3 Target Level** if the trade goes live and the price reaches the Target Level, the status will be updated to "Closed - Profit".

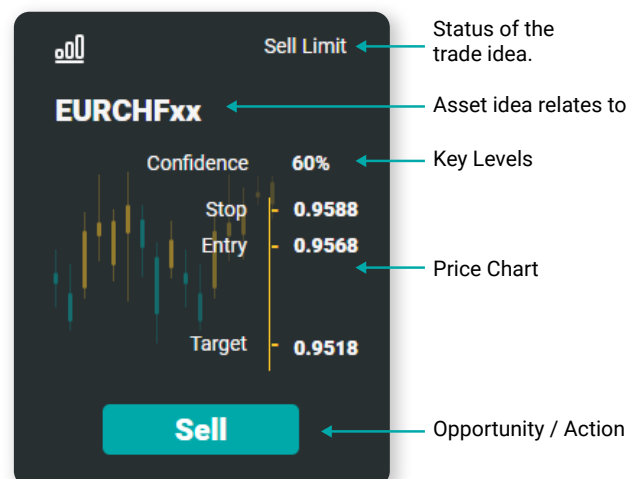
If the trade does not meet the entry level and does not go live, the status will be updated to "Expired".

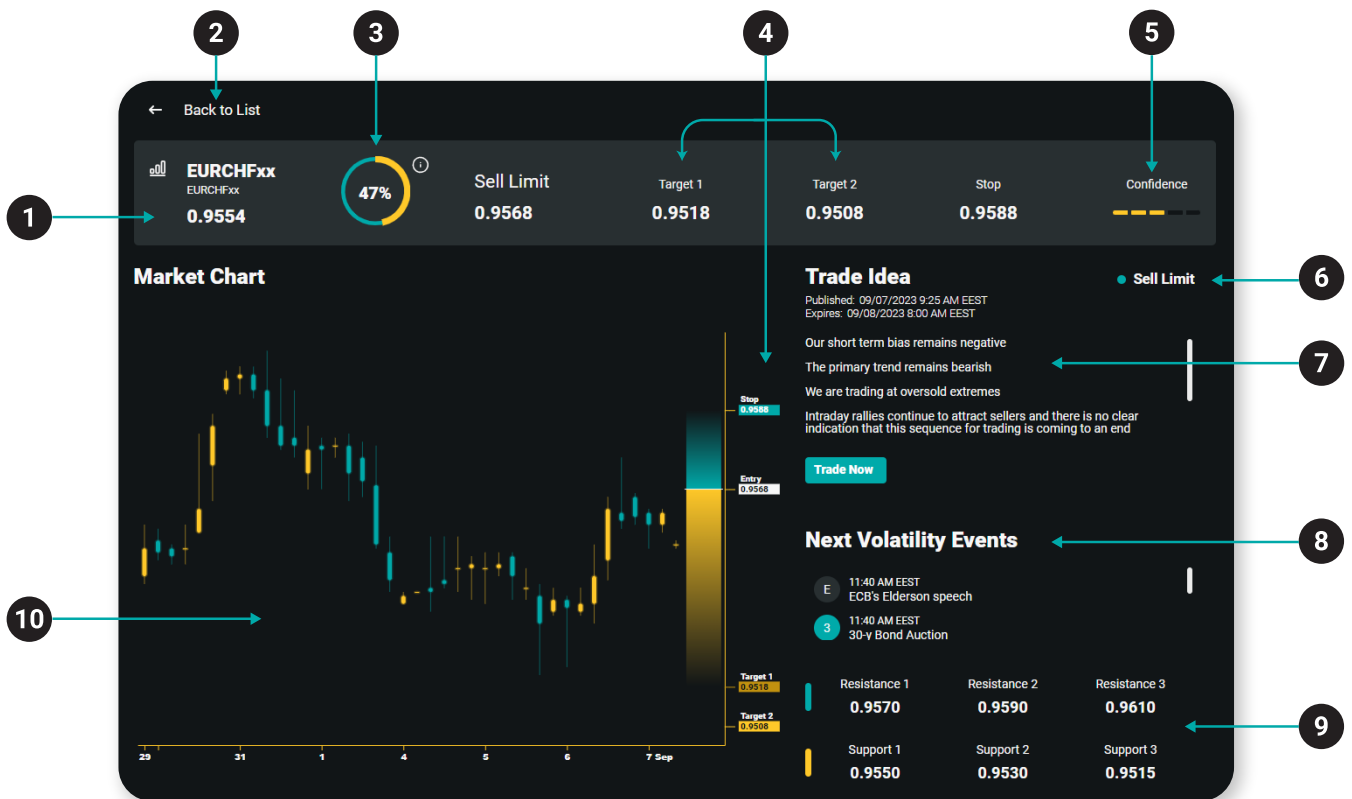


Sell Signals

- 1 Entry Level** if the trade meets the entry level, the status will change to "Live".
- 2 Stop Level** if the trade goes live but the price rises to the stop level, the trade will close and the status will be updated to "Closed - Loss".
- 3 Target Level** if the trade goes live and the price drops to the Target Level, the status will be updated to "Closed - Profit".

If the trade does not meet the entry level and does not go live, the status will be updated to "Expired".





- 1 **Current Asset Price** This is the price of the asset at the time the Trade Idea was published.
- 2 **Back to List** Link back to all Trade Ideas.
- 3 **News Sentiment Score** this score reflects how the global investment community currently feels about the asset. It is measured by analysing millions of news articles every day using AI technology.
- 4 **Target Levels** Determine Trade Idea effectiveness.
- 5 **Confidence Rating** This is an analyst's rating score, calculated using a proprietary formula based on multiple criteria.
- 6 **Signal Status** This is the current status of the signal.
- 7 **Trade Idea** Analyst Trade Idea & corresponding strategy.
- 8 **Next Volatility Events** Upcoming events likely to affect the asset and signal.
- 9 **Levels** Key support and resistance levels that will affect the Trade Idea.
- 10 **Chart** Current price chart.

Timeframes

Published / Expiry Dates and Times

We publish reports across three global timeframes.

Region / Asset	Publish Time	Expiry Time
European Session	06.30 (GMT)	21.00 (GMT)
US Session	12.30 (GMT)	21:00 (GMT)
Cryptocurrencies	12.30 (GMT)	+1 day 12:30 (GMT)
Asian Pacific Session	15.30 (GMT)	+1 day 15:30 (GMT)

Trade Idea

Signal Centre employs experienced and fully qualified technical analysts who use their skill and expertise to formulate good risk/reward Trade Ideas.

Each signal provides detail on the rationale for the trade, allowing users to develop a better understanding of technical analysis and educating users in their trading journey.

Risk / Reward Scale

Each trade displays the risk and potential reward. All Trade Ideas published have a risk/reward ratio in excess of 2:1, sometimes this can be even as much as 5:1.



Price Chart

The chart displays current price data and data from the past 7 days. Each candle represents 4 hours of price action.

On the right hand axis, the red and green scale is a visual guide that shows the potential gain and losses of the signal. Use these to monitor the price activity within the key levels set out.

Next Volatility Events

These are the events taking place during the time frame of the trade that are likely to impact market activity and have the potential to increase volatility.

Our analysts will be keeping a watchful eye on the data arising from these events and will update the signal accordingly.

Support & Resistance Levels

These are the levels deemed to be significant for that asset. This could be a trend line, Ichimoku Cloud level or perhaps a Fibonacci level.

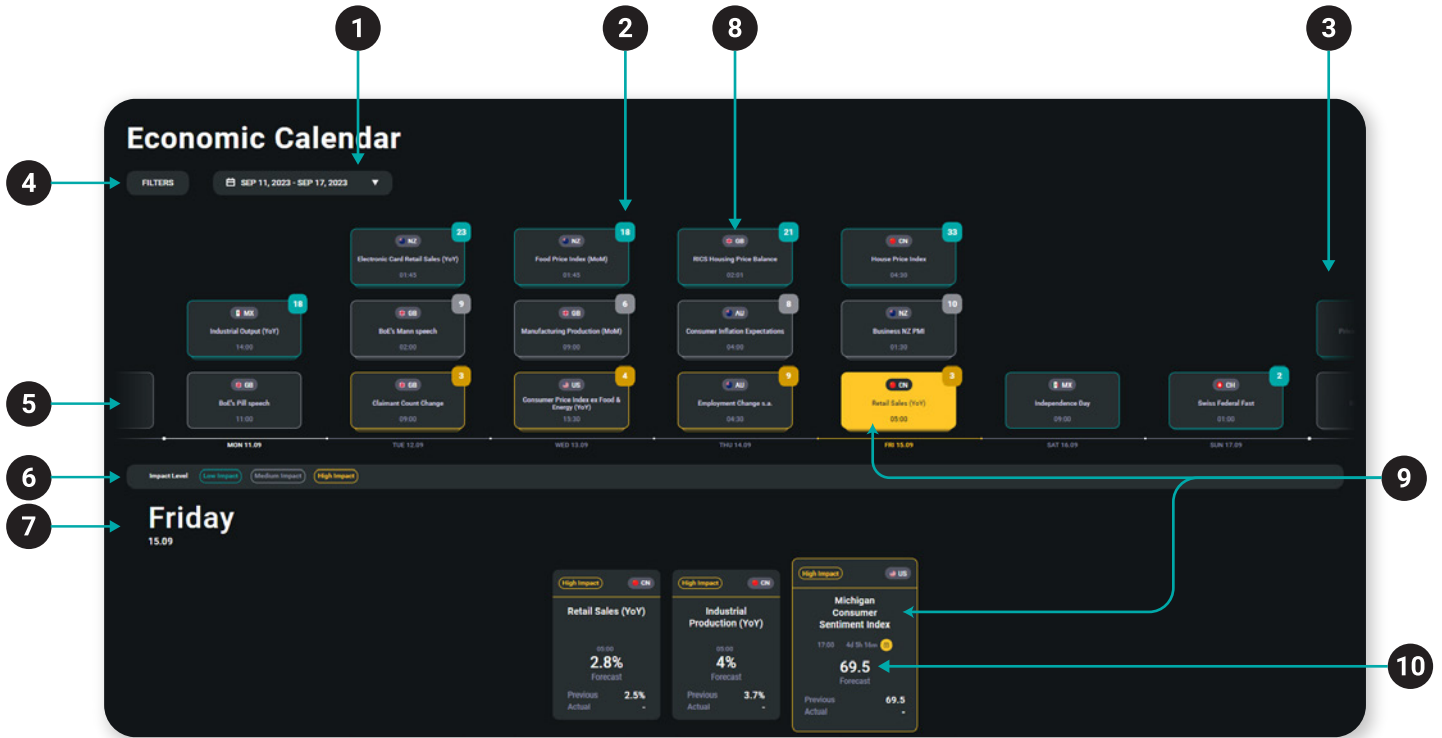
These levels indicate where buyers and sellers could emerge on both the downside and the upside.

Signal Status

This is the current status of the signal. See notes [above](#).

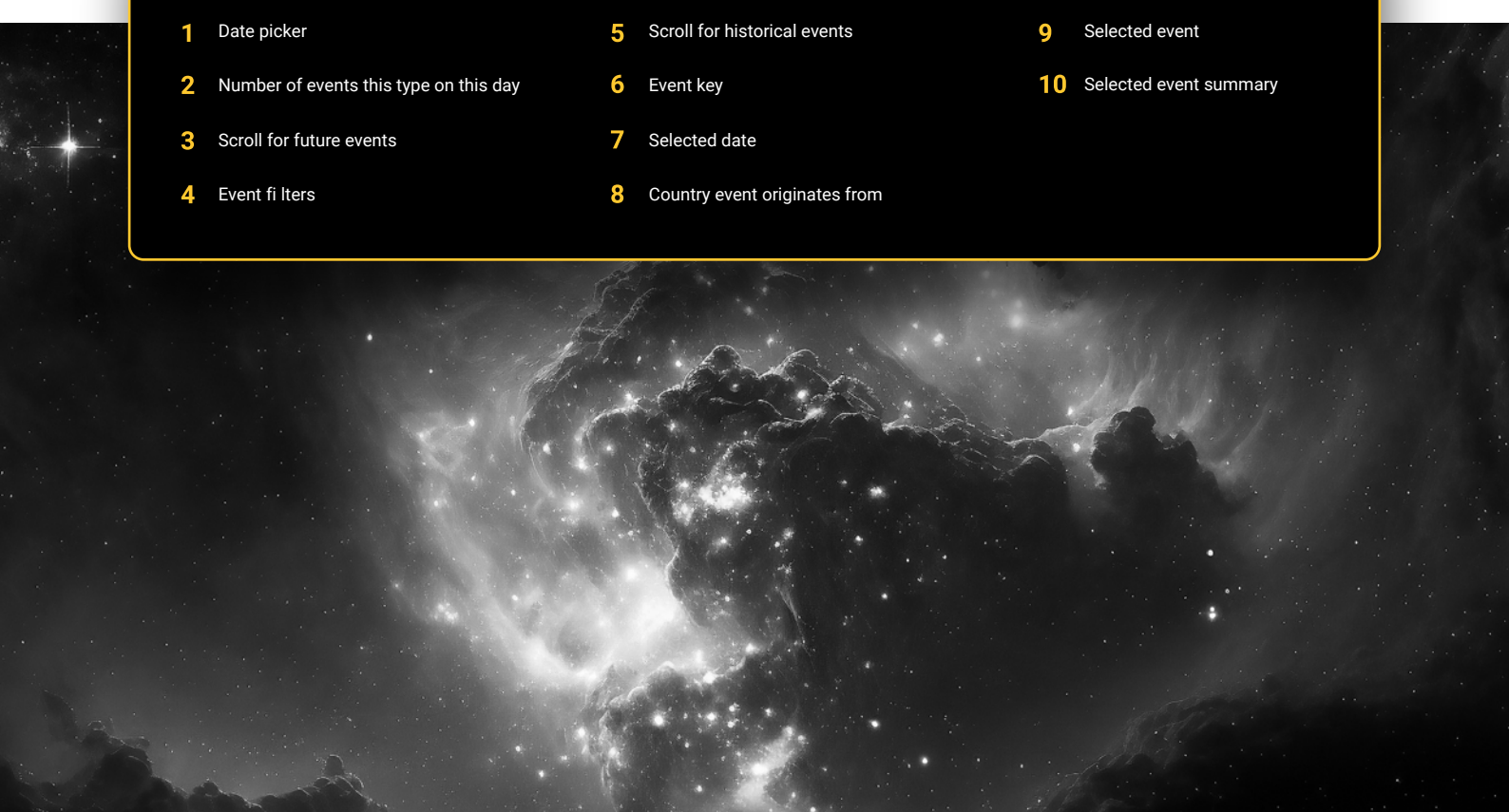


How to Navigate the Homepage



Key for Reference

- | | | |
|---|--|----------------------------------|
| 1 Date picker | 5 Scroll for historical events | 9 Selected event |
| 2 Number of events this type on this day | 6 Event key | 10 Selected event summary |
| 3 Scroll for future events | 7 Selected date | |
| 4 Event filters | 8 Country event originates from | |





ECONOMIC CALENDAR USER GUIDE

How to Select an Event

You can select an event directly from the homepage by clicking on a tab in the timeline, scrolling left for historical events and right for future events. Alternatively, refine your selection by using one of the several filters available.

Filter By Impact Level

Events are categorised into **High, Medium and Low** impact events according to the effect the event is likely to have on the asset price and the wider market.

You can filter by **Impact Level** by clicking on an event with your preferred Impact Level even in the timeline view. This will display all events of that level for that particular day in the space below.

- Number of events on this type on this date
- Display of all events with selected impact level on this day





ECONOMIC CALENDAR USER GUIDE

Alternatively, use the **Filters** view to select the **Impact Level**. This will return all events of this level for the current time period.

- **Filters view** to select Impact Level

Impact Level: Low Medium High APPLY CANCEL

Major Countries:

- All
- United States
- United Kingdom
- EMU
- Germany
- China
- Japan
- Canada
- Australia
- New Zealand
- Switzerland
- France
- Italy
- Spain

Other Countries:

- All
- Russia
- Turkey
- Mexico
- Sweden
- Norway
- Greece
- Portugal
- Ireland
- Austria
- Belgium
- Netherlands
- Finland
- Hong Kong SAR China

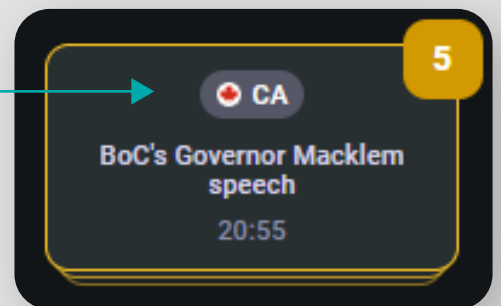
Results: 211 APPLY

Did you know?
If you adjusted the time period prior to this step then the search results will display events for the adjusted period.

Filter By Country

All events are categorised by the country where the economic announcement originates from.

- The country code is displayed on each individual event in the timeline but to search by Country you will need to use the Filters View.



The list of countries is categorised into **Major** and **Other Countries**, with the Majors being the more popular assets to trade.

- **Other Countries**
- **Major Countries**

Impact Level: Low Medium High APPLY CANCEL

Major Countries:

- All
- United States
- United Kingdom
- EMU
- Germany
- China
- Japan
- Canada
- Australia
- New Zealand
- Switzerland
- France
- Italy
- Spain

Other Countries:

- All
- Russia
- Turkey
- Mexico
- Sweden
- Norway
- Greece
- Portugal
- Ireland
- Austria
- Belgium
- Netherlands
- Finland
- Hong Kong SAR China

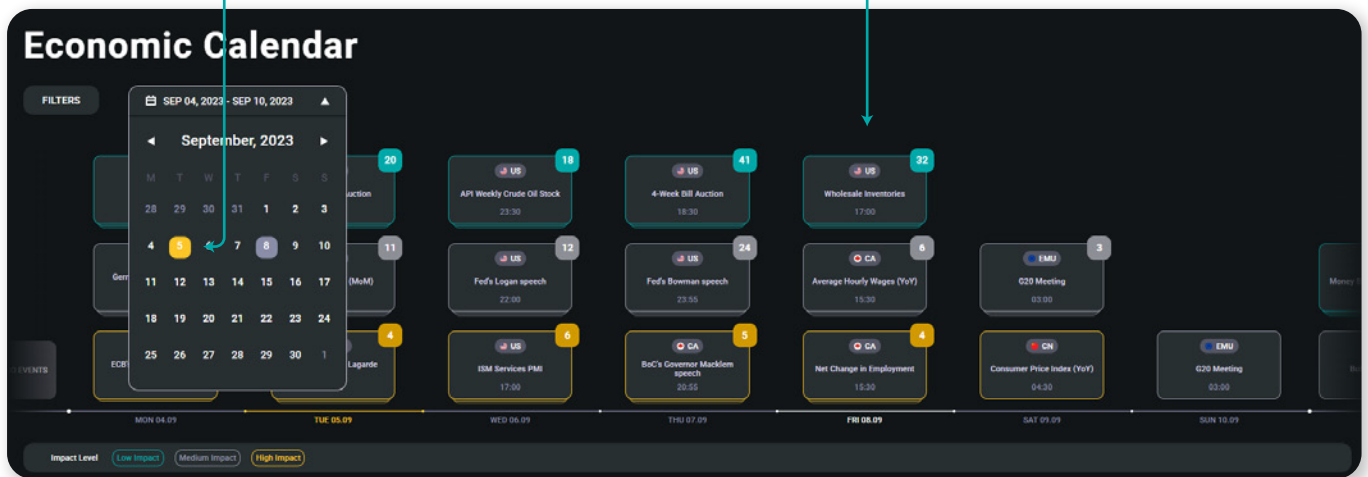
Results: 211 APPLY



Filter by Date

All events are categorised according to the date of the announcement. You can filter by dates using several functions:

- Scrolling Timeline
- Date Picker



Scrolling Timeline

You can filter by dates using the scroll bar, clicking on the left side of the timeline to see historical events and clicking to the right of the timeline to see future events. The dates on display can be seen on the line underneath the event columns.

Date Picker

Click on the Date Picker and use the arrows to find the month you wish to view. Select the date in that month by clicking on the number and the timeline will automatically update to that date. The selected date is visible underneath the event columns.

How to Interpret the Event Data

About the event

To learn more about an individual event, we recommend you start with reading the Event Description. This will explain what the event is about, which country the data is released from and why the event is important within the markets.

- Event Description
- Event Name

52-Week Bill Auction

Displayed in the calendar is the average yield on the bills auctioned by US Department of Treasury. Treasury bills are short-term securities maturing in one year or less. The yield on the bills represents the return an investor will receive by holding the bond until maturity. Investors monitor the yield volatility and compare the average rate at auction to the rate at previous auctions of the same security as an indicator of the government debt situation.



Affected Assets

Below the **Event Description** is a list of the assets that the selected event is likely to affect. These vary according to country of origin and the **Impact Level** of the event.

Select an asset from the list of **Affected Assets** to learn more about how the event has affected this asset's performance in the past, what the current data is telling you and what the anticipated impact of the next event will be on this asset.

- Affected Asset

What Assets does this event affect?

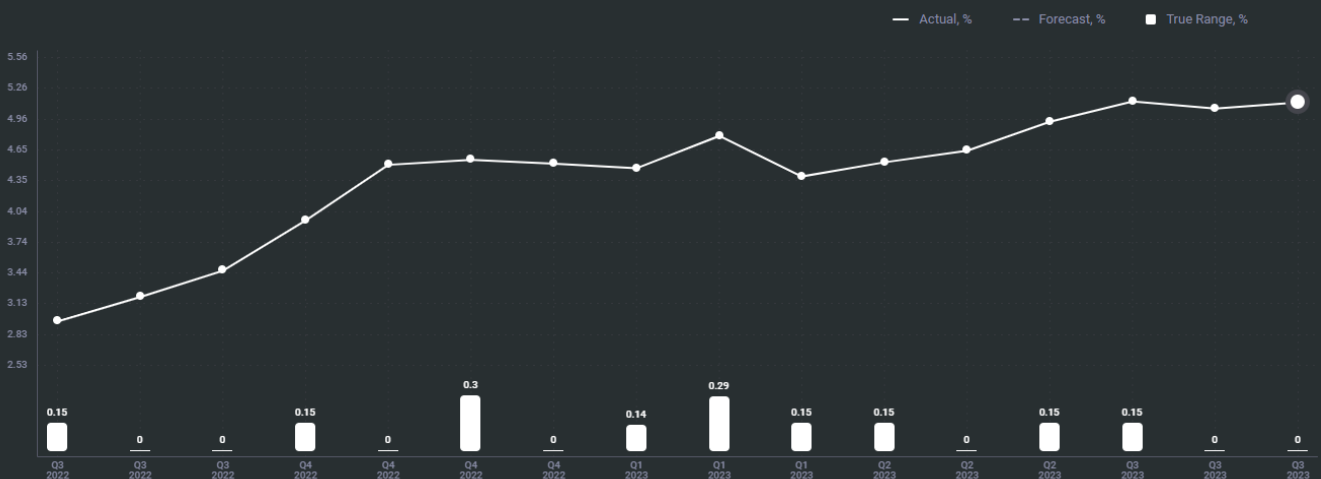
[Australian Dollar vs US Dollar](#)
[British Pound vs US Dollar](#)
[Euro vs US Dollar](#)
[NZ Dollar vs US Dollar](#)
[US Dollar vs Canadian Dollar](#)
[US Dollar vs Chinese Yuan](#)
[US Dollar vs Czech Koruna](#)
[US Dollar vs Danish Krone](#)
[US Dollar vs Hong Kong Dollar](#)
[US Dollar vs Hungarian Forint](#)
[View All Assets](#)

Impact on Affected Asset

Event History

The History Chart displays the Forecast and Actual data of the past 16 events in a linear chart display. Some event forecasts are more accurate than others and this chart can help you to determine the potential accuracy of future events. Traders should factor this variance into their decision making.

History of 52-Week Bill Auction

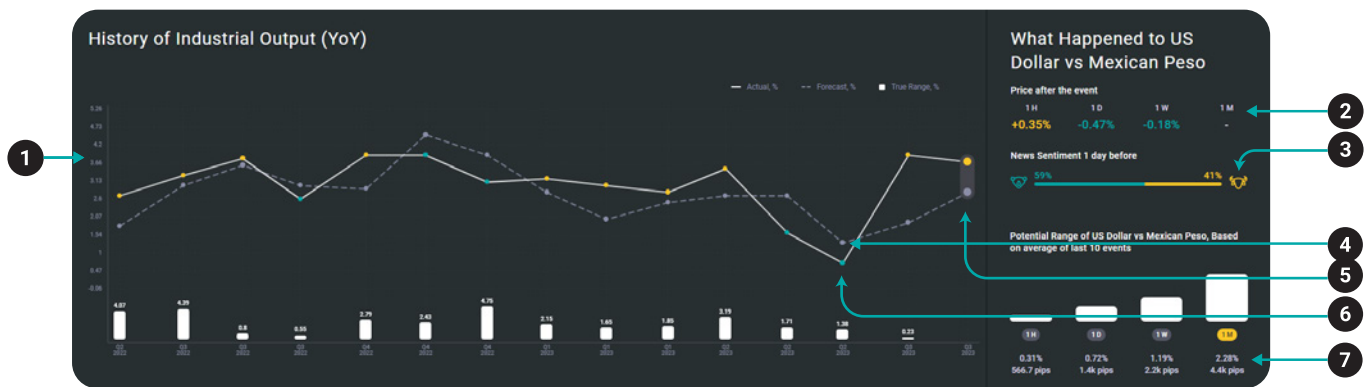




True Range

The True Range figure below the History Chart is the total price movement of your selected, affected asset after the event in absolute terms. For example, if the asset price moved 15% up and 15% down, the True Range is going to be 30% and not 0%.

The True Range data can be viewed according to a time frame of 1 Hour, 1 Day, 1 Week or 1 Month after the event. Use the Potential Range chart to the right of the History Chart to amend the time frame on the History Chart.



Key for Reference

- 1 Historical event chart
- 2 % change in asset price by time frame
- 3 News sentiment score
- 4 Forecast figure
- 5 Difference between forecast and actual figures
- 6 Actual figure
- 7 Potential Range chart

Potential Range

The Potential Range chart is the average of the True Range price movement of your selected, affected asset according to specific time frames for the past 10 events. Use this figure as a guide to anticipate how the asset price is likely to move after the next event.

Potential Range

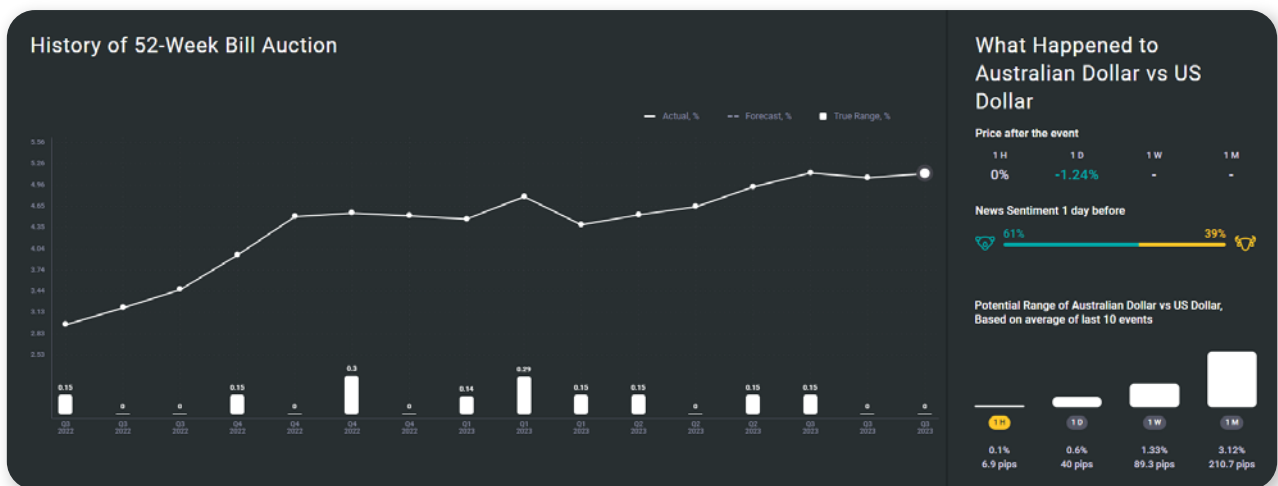
To see how the price of your selected instrument changed after a specific event in the past, click on an event in the Historical Chart.

The price movement of 1 Hour, 1 Day, 1 Week and 1 Month is displayed.



Example

In this example below, we have clicked on the Q3 2021 Nonfarm Payroll event where there was a large variance between the Forecasted and Actual data. There was a bullish price movement 1 Hour and 1 Day after the event but a fairly significant bearish movement 1 Week and 1 Month after the event. This could be because the initial movement had been priced in based on the forecasted figure whereas the bearish movement was a result of the figures coming in well below expectation and the market adjusted.

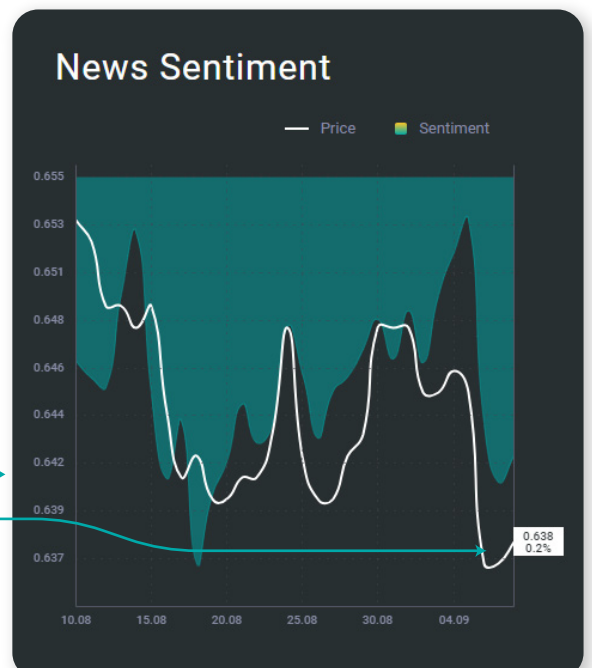
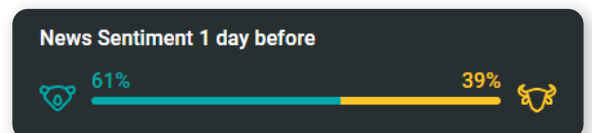


News Sentiment

The News Sentiment gauge is a metric of how the global investment community is feeling about this particular asset 1 Day before the event. This could contribute to the movement of the asset price both before and after the event particularly if the results are below expectations.

To see the longer term effect of news sentiment on the asset's price, you can use the News Sentiment chart. A drop in sentiment can often lead to a faster and more significant movement in an asset's price whereas positive sentiment can take longer to be priced in and not necessarily as significant.

- Sentiment and price data chart →
- Current asset price →





News

This section displays the latest FX News from FXStreet. Stay up to date with the latest stories affecting your selected, affected asset.

- Click on the 'Show More' button to see the stories in full
- Latest News from **FXStreet**

News

08 Sep 2023 12:29

AUD/USD oscillates close to 0.6400, focus shifts to China's inflation

The AUD/USD pair trades back and forth near the crucial resistance of 0.6400 in the London session. The Aussie asset turns sideways following the foot

► [Show More](#)

08 Sep 2023 07:52

AUD/USD: A breach of 0.6300 seems not favoured – UOB

In the opinion of UOB Group's Economist Lee Sue Ann and Markets Strategist Quek Ser Leang, a drop below the 0.6300 mark in AUD/USD appears unlikely fo

► [Show More](#)

08 Sep 2023 07:43

AUD/USD Price Analysis: Pair recovers toward 0.6400, remains under pressure

AUD/USD recovers from the previous day's losses, trading higher around 0.6390 during the early hours of the European session on Friday. The Australian

► [Show More](#)





The market signals displayed in this document are for informational purposes only and it is not considered to be an advice or recommendation of any kind whatsoever from 4XC.

Market Signals are authorised by the FCA (Financial Contact Authority) in the United Kingdom, and provided by Acuity Trading Limited, a company incorporated in England with registration number 08350747.

Anyone who wishes to use Acuity Trading Market Signals takes full responsibility for their actions. We recommend you do your due diligence on any information perceived from this page before trading.

Forex | Metals | Index CFDs & Oil | Cryptocurrencies | Forward Contracts

Trading Forex/CFDs on margin carries a high level of risk and may not be suitable for all investors as you could sustain losses in excess of deposits. The products are intended for retail, professional and eligible counterparty clients. For clients who maintain account(s) with 4XC, retail clients could sustain a total loss of deposited funds but are not subject to subsequent payment obligations beyond the deposited funds and professional clients could sustain losses in excess of deposits. Prior to trading any products offered by 4XC, any affiliates of aforementioned firms, or other firms within 4XC of companies [collectively the "4xCube Ltd"], carefully consider your financial situation and experience level. 4xCube Ltd may provide general commentary which is not intended as investment advice and must not be construed as such. Seek advice from a separate financial advisor. 4xCube Ltd assumes no liability for errors, inaccuracies or omissions; does not warrant the accuracy, completeness of information, text, graphics, links or other items contained within these materials. Read and understand the Terms and Conditions on 4xCube Ltd websites prior to taking further action.

4XC is a trademark of 4xCube Ltd, registered in the Cook Islands with number ICA 12767/2018 and licensed by the FSC (Financial Supervisory Commission) with Money-Changing License number MC03/2018 (License applies only to Forex Products).

4xCube Ltd is audited by McMillan Woods.



4xCube Ltd does not offer its services to residents of certain jurisdictions such as USA, Iraq, Iran, Myanmar and North Korea.